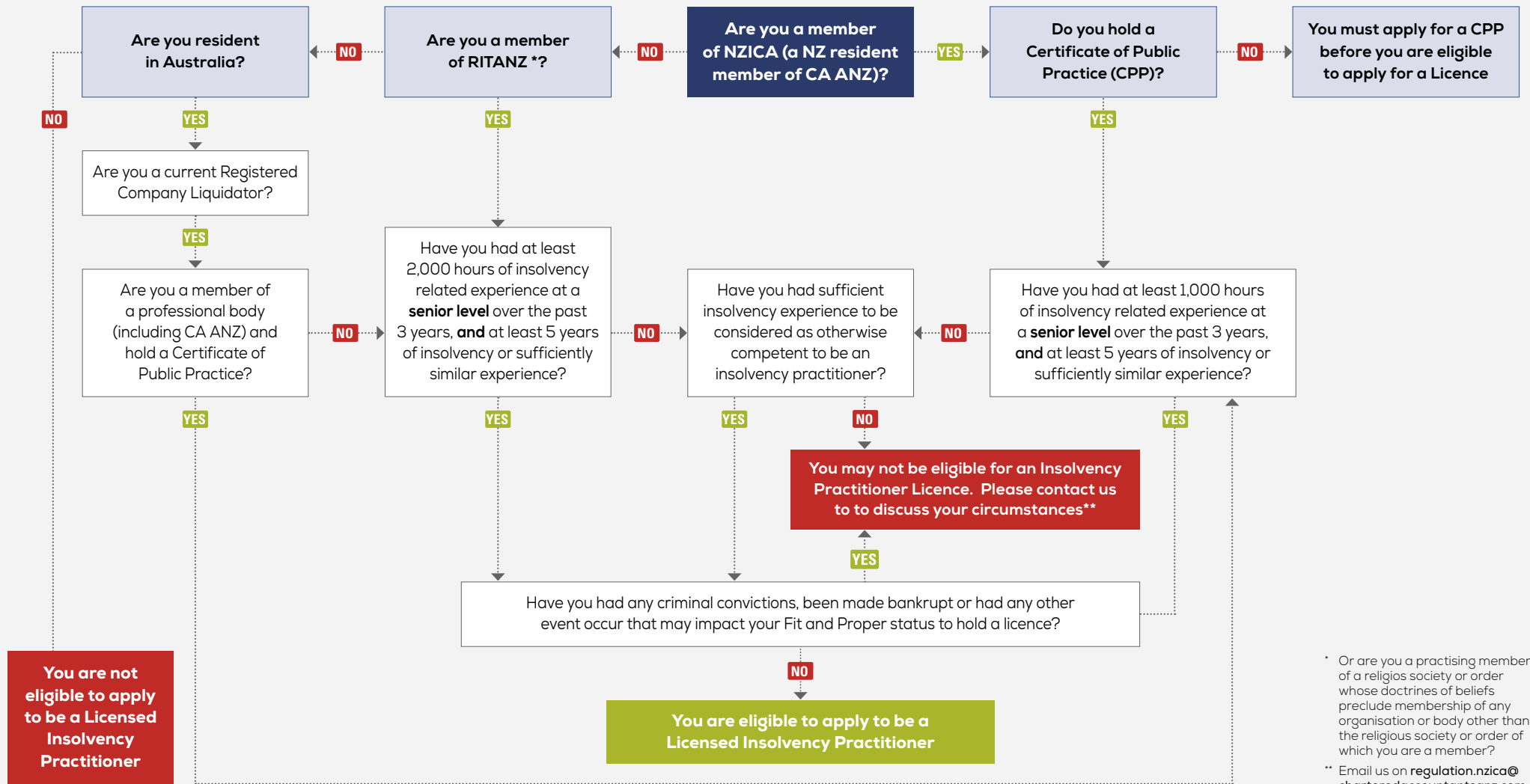


# Insolvency Licence Eligibility in New Zealand



\* Or are you a practising member of a religious society or order whose doctrines or beliefs preclude membership of any organisation or body other than the religious society or order of which you are a member?

\*\* Email us on [regulation.nzica@charteredaccountantsanz.com](mailto:regulation.nzica@charteredaccountantsanz.com)